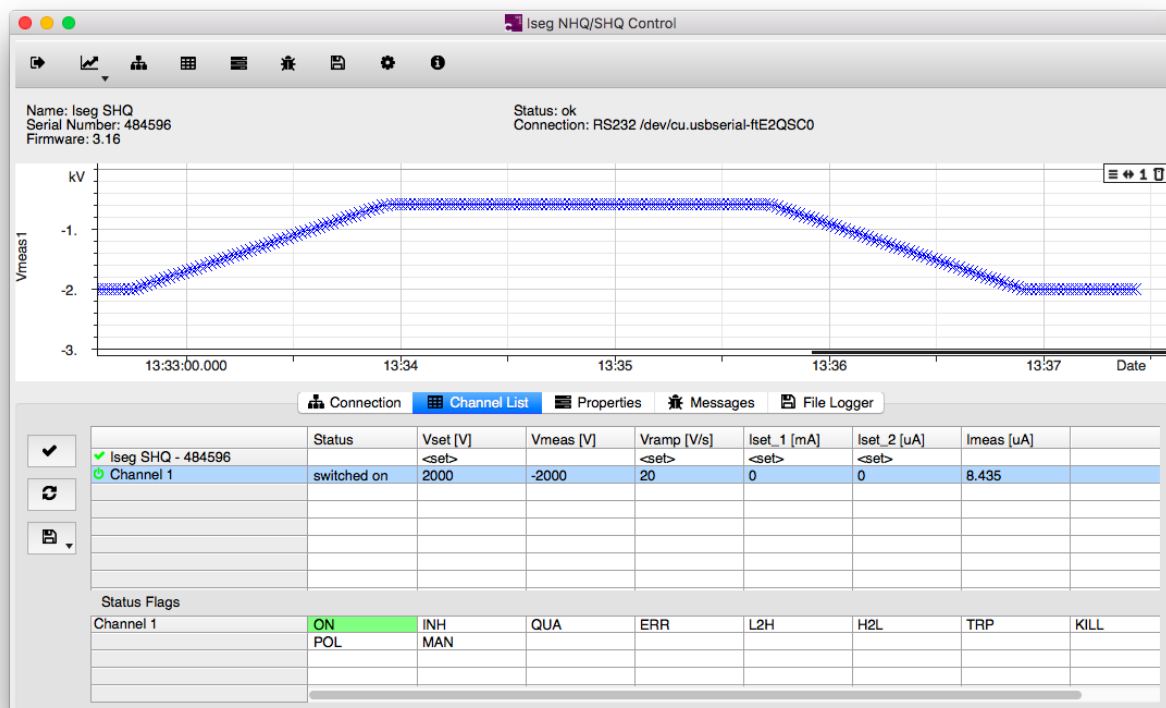


Technical documentation
Last changed on: 06.07.2017

iseg NHQ/SHQ control2 (Windows, Mac, Linux)

Control software for NHQ and SHQ HV power supplies with RS232 interface



Document history

Version	Date	Major changes
1.0	06.07.2017	Initial documentation

Disclaimer / Copyright

Copyright © 2017 by iseg Spezialelektronik GmbH / Germany. All Rights Reserved.

This document is under copyright of iseg Spezialelektronik GmbH, Germany. It is forbidden to copy, extract parts, duplicate for any kind of publication without a written permission of iseg Spezialelektronik GmbH. This information has been prepared for assisting operation and maintenance personnel to enable efficient use.

The information in this manual is subject to change without notice. We take no responsibility for any mistake in the document. We reserve the right to make changes in the product design without reservation and without notification to the users. We decline all responsibility for damages and injuries caused by an improper use of the device.

Important security information

It is strongly recommended to read the operator's manual before operation. To avoid injury of users it is not allowed to open the unit. There are no parts which can be maintained by users inside of the unit. Opening the unit will void the warranty.

We decline all responsibility for damages and injuries caused by an improper use of the module. It is strongly recommended to read the operators manual before operation.

WARNING!



WARNING!

The non-observance of the advices marked as "Warning!" could lead to possible injury or death.

ATTENTION!



ATTENTION!

Advices marked as "Attention!" describe actions to avoid possible damages to property.

INFORMATION



INFORMATION

Advices marked as "Information" give important information.

Table of Contents

	Document history.....	2
	Disclaimer / Copyright.....	2
	Important security information.....	2
1	License.....	4
2	About.....	6
3	System requirements.....	6
4	Installation and Updates.....	6
5	Usage.....	7
	5.1 The Connection Page.....	7
	5.2 The Channel List Page.....	8
	5.3 The Properties Page.....	9
	5.4 The Messages Page.....	9
	5.5 The File Logger Page.....	10
	5.6 The Configuration Page.....	11
	5.7 The Graph Window.....	12
6	Appendix.....	13
7	Manufacturer´s contact.....	13

1 License

Copyright © 2017 iseg Spezialelektronik GmbH

***** END USER LICENSE AGREEMENT *****

IMPORTANT: PLEASE READ THIS LICENSE CAREFULLY BEFORE USING THIS SOFTWARE.

Last updated: October 1st, 2016

Please read this End-User License Agreement ("Agreement") carefully before clicking the "I Agree" button, downloading or using isegControl ("Application"). By clicking the "I Agree" button, downloading or using the Application, you are agreeing to be bound by the terms and conditions of this Agreement. This Agreement is a legal agreement between you (either an individual or a single entity) and iseg Spezialelektronik GmbH and it governs your use of the Application made available to you by iseg Spezialelektronik GmbH. If you do not agree to the terms of this Agreement, do not click on the "I Agree" button and do not download or use the Application. If possible, remove isegControl from your computer now and, if applicable, promptly return to iseg Spezialelektronik GmbH by mail any copies of isegControl and related documentation and packaging in your possession. The Application is licensed, not sold, to you by iseg Spezialelektronik GmbH for use strictly in accordance with the terms of this Agreement.

Distribution

isegControl and the license herein granted shall not be copied, shared, distributed, re-sold, offered for re-sale, transferred or sub-licensed in whole or in part except that you may make one copy for archive purposes only. For information about redistribution of isegControl contact iseg Spezialelektronik GmbH.

License

iseg Spezialelektronik GmbH grants you a revocable, non-exclusive, non-transferable, limited license to download, install and use the Application solely for your personal, non-commercial purposes strictly in accordance with the terms of this Agreement. Your license to use isegControl is limited to the number of licenses purchased by you. You shall not allow others to use, copy or evaluate copies of isegControl.

Use Restrictions

You shall use isegControl in compliance with all applicable laws and not for any unlawful purpose. Without limiting the foregoing, use, display or distribution of isegControl together with material that is pornographic, racist, vulgar, obscene, defamatory, libelous, abusive, promoting hatred, discriminating or displaying prejudice based on religion, ethnic heritage, race, sexual orientation or age is strictly prohibited. Each licensed copy of isegControl may be used on one single computer location by one user. Use of isegControl means that you have loaded, installed, or run isegControl on a computer or similar device. If you install isegControl onto a multi-user platform, server or network, each and every individual user of isegControl must be licensed separately. You may make one copy of isegControl for backup purposes, providing you only have one copy installed on one computer being used by one person. Other users may not use your copy of isegControl. The assignment, sublicense, networking, sale, or distribution of copies of isegControl are strictly forbidden without the prior written consent of iseg Spezialelektronik GmbH. It is a violation of this agreement to assign, sell, share, loan, rent, lease, borrow, network or transfer the use of isegControl. If any person other than yourself uses isegControl registered in your name, regardless of whether it is at the same time or different times, then this agreement is being violated and you are responsible for that violation!

Copyright Restriction

This Software contains copyrighted material, trade secrets and other proprietary material. You shall not, and shall not attempt to, modify, reverse engineer, disassemble or decompile isegControl. Nor can you create any derivative works or other works that are based upon or derived from isegControl in whole or in part. iseg Spezialelektronik GmbH's name, logo and graphics file that represents isegControl shall not be used in any way to promote products developed with isegControl. iseg Spezialelektronik GmbH retains sole and exclusive ownership of all right, title and interest in and to isegControl and all Intellectual Property rights relating thereto. Copyright law and international copyright treaty provisions protect all parts of isegControl, products and services. No program, code, part, image, audio sample, or text may be copied or used in any way by the user except as intended within the bounds of the single user program. All rights not expressly granted hereunder are reserved for iseg Spezialelektronik GmbH.

Limitation of Responsibility

You will indemnify, hold harmless, and defend iseg Spezialelektronik GmbH, its employees, agents and distributors against any and all claims, proceedings, demand and costs resulting from or in any way connected with your use of iseg Spezialelektronik GmbH's Software. In no event (including, without limitation, in the event of negligence) will iseg Spezialelektronik GmbH, its employees, agents or distributors be liable for any consequential, incidental, indirect, special or punitive damages whatsoever (including, without limitation, damages for loss of profits, loss of use, business interruption, loss of information or data, or pecuniary loss), in connection with or arising out of or related to this Agreement, isegControl or the use or inability to use

isegControl or the furnishing, performance or use of any other matters hereunder whether based upon contract, tort or any other theory including negligence. iseg Spezialelektronik GmbH's entire liability, without exception, is limited to the customers' reimbursement of the purchase price of the Software (maximum being the lesser of the amount paid by you and the suggested retail price as listed by iseg Spezialelektronik GmbH) in exchange for the return of the product, all copies, registration papers and manuals, and all materials that constitute a transfer of license from the customer back to iseg Spezialelektronik GmbH.

Warranties

Except as expressly stated in writing, iseg Spezialelektronik GmbH makes no representation or warranties in respect of this Software and expressly excludes all other warranties, expressed or implied, oral or written, including, without limitation, any implied warranties of merchantable quality or fitness for a particular purpose.

DISCLAIMER OF WARRANTY

THIS SOFTWARE AND THE ACCOMPANYING FILES ARE SOLD "AS IS" AND WITHOUT WARRANTIES AS TO PERFORMANCE OR MERCHANTABILITY OR ANY OTHER WARRANTIES WHETHER EXPRESSED OR IMPLIED. THIS DISCLAIMER CONCERNS ALL FILES GENERATED AND EDITED BY ISEGCONTROL AS WELL.

Third-Party Services

The Application may display, include or make available third-party content (including data, information, software extensions, applications and other products services) or provide links to third-party websites or services ("Third-Party Services"). You acknowledge and agree that isegControl shall not be responsible for any Third-Party Services, including their accuracy, completeness, timeliness, validity, copyright compliance, legality, decency, quality or any other aspect thereof. isegControl does not assume and shall not have any liability or responsibility to you or any other person or entity for any Third-Party Services. Third-Party Services and links thereto are provided solely as a convenience to you and you access and use them entirely at your own risk and subject to such third parties' terms and conditions.

Term and Termination

This Agreement shall remain in effect until terminated by you or iseg Spezialelektronik GmbH. iseg Spezialelektronik GmbH may, in its sole discretion, at any time and for any or no reason, suspend or terminate this Agreement with or without prior notice. This Agreement will terminate immediately, without prior notice from iseg Spezialelektronik GmbH, in the event that you fail to comply with any provision of this Agreement. You may also terminate this Agreement by deleting the Application and all copies thereof from your mobile device or from your computer. Upon termination of this Agreement, you shall cease all use of the Application and delete all copies of the Application from your mobile device or from your computer. Termination of this Agreement will not limit any of iseg Spezialelektronik GmbH's rights or remedies at law or in equity in case of breach by you (during the term of this Agreement) of any of your obligations under the present Agreement.

Amendments to this Agreement

iseg Spezialelektronik GmbH reserves the right, at its sole discretion, to modify or replace this Agreement at any time. If a revision is material we will provide at least 30 days' notice prior to any new terms taking effect. What constitutes a material change will be determined at our sole discretion. By continuing to access or use our Application after any revisions become effective, you agree to be bound by the revised terms. If you do not agree to the new terms, you are no longer authorized to use the Application.

Governing Law

The laws of Germany, excluding its conflicts of law rules, shall govern this Agreement and your use of the Application. Your use of the Application may also be subject to other local, state, national, or international laws. You hereby irrevocably attorn and submit to the non-exclusive jurisdiction of the courts of Germany therefrom. If any provision shall be considered unlawful, void or otherwise unenforceable, then that provision shall be deemed severable from this License and not affect the validity and enforceability of any other provisions.

Contact Information

If you have any questions about this Agreement, please contact us.

Entire Agreement

The Agreement constitutes the entire agreement between you and iseg Spezialelektronik GmbH regarding your use of the Application and supersedes all prior and contemporaneous written or oral agreements between you and iseg Spezialelektronik GmbH. You may be subject to additional terms and conditions that apply when you use or purchase other services of iseg Spezialelektronik GmbH, which iseg Spezialelektronik GmbH will provide to you at the time of such use or purchase.

2 About

This manual describes how to control and monitor iseq NHQ/SHQ control2 power supply devices using iseq NHQ/SHQ control2. The provided application controls iseq NHQ/SHQ hardware connected locally over a serial (RS232) cable connection. iseq approved USB to RS-232 adapters allow the control with contemporary hardware. The software runs on a personal computer (PC) using Windows, Linux and Mac operating systems (see system requirements). The software allows to control the standard and high precision series. iseq NHQ/SHQ control2 uses the ASCII command set defined in the power supply's users manual.

ATTENTION!



ATTENTION!

It is highly recommended to read the power supply's manual before using this software.

The following user guide describes the functionality of iseq NHQ/SHQ control2 that allows to control and monitor the connected high voltage power supplies. It illustrates the purpose of iseq NHQ/SHQ control2 including examples.

3 System requirements

	WINDOWS	LINUX	MAC
OS versions	XP, Vista, 7 professional, 8, 10 (32 / 64bit)	Ubuntu(14.04 or higher) , Debian(jessie), others on request	OS X (10.6 and higher)
Interfaces	RS-232 Recommended USB to RS232 interfaces:		
CPU	Minimum: Intel Core 2 Quad CPU Q6600 @ 2.40GHz / AMD Phenom 9850 Quad-Core Processor@ 2.5GHz Recommended: Intel Core i5 3470 @ 3.2GHZ (4 CPUs) / AMD X8 FX-8350 @ 4GHZ (8 CPUs)		
RAM	Minimum: 4 GB Recommended: 8 GB		
Free disc space	50 MB	50 MB	50 MB
Display	Minimum: 1,024x768px / Recommended: 1,280x1,024 or higher		

Table 1: System requirements

4 Installation and Updates

Follow these general steps to install iseq NHQ/SHQ Control

Windows:

- Download and unpack the application from its distribution format (.zip).
- Locate the executable file path (NHQ SHQ Control/bin/iseq_nhq_shq_control.exe) to open the application.

Linux:

- Download the application from its distribution format (.tar.gz)
- untar the application and convert the shell script to executable

```
$ sudo tar -xvf iseq_nhq_shq_control
```

```
$ cd NHQSHQControl
```

```
$ chmod +x ./bin/iseq_nhq_shq_control
```
- open the application

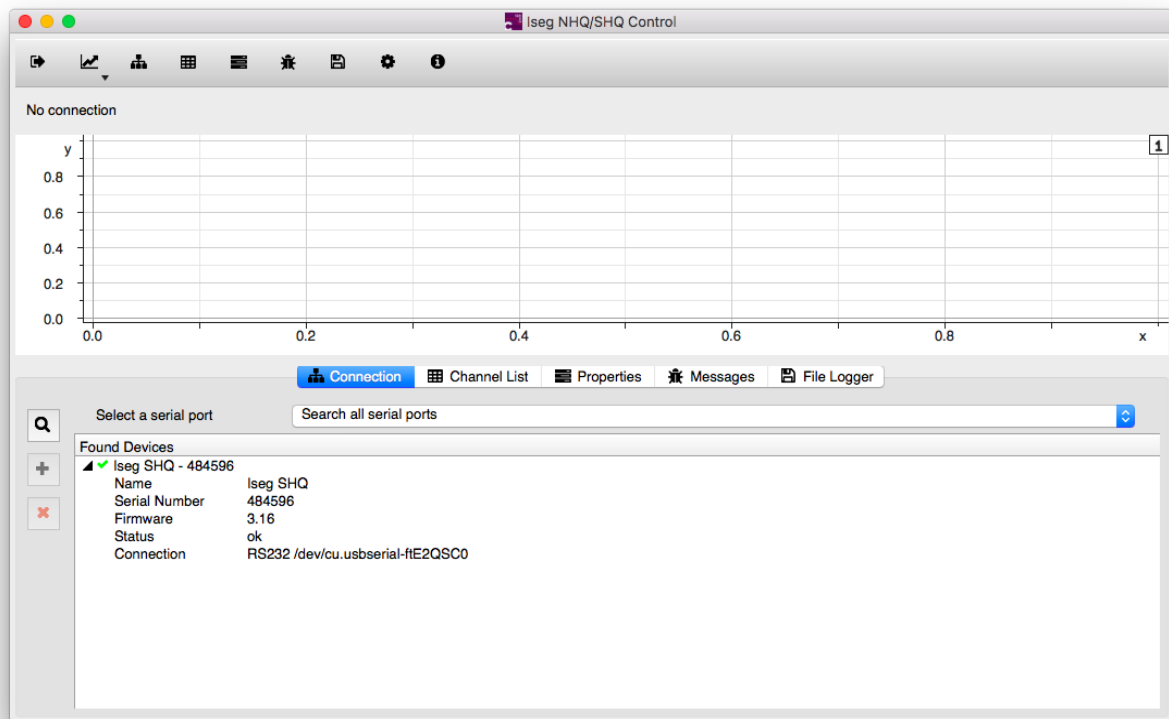
```
$ ./bin/ iseq_nhq_shq_control.sh
```

Mac:

- Download the application from its distribution format (.dmg)
- Open .dmg and agree the license information.
- A new finder window is opened with iseq_nhq_shq_control.app and Applications folder.
- Drag and drop iseq_nhq_shq_control.app to Applications and find the executable file in Applications.
- Open iseq_nhq_shq_control in Applications folder.

5 Usage

5.1 The Connection Page

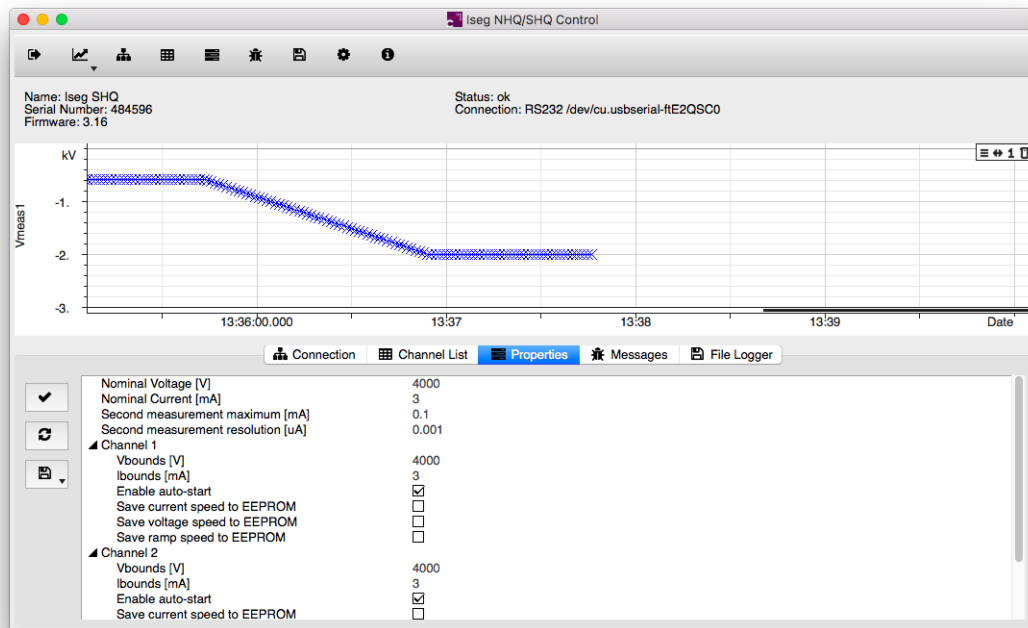


The first step in using iseg NHQ/SHQ is to establish a connection to the controlled power supply. The available serial ports can be searched for SHQ or NHQ power supplies. Therefore select “Search all serial ports” and click on the “Search For Device” button. All serial ports will be scanned for connected devices. If a SHQ or NHQ power supply is found it appears in the “Found Devices” list.

- To control a found device, select this device in the list and click on the “Add Selected Device” button.
- The connection to the device is established in a permanent way. The tool automatically switches to the “Channel List” page.
- The currently controlled device can be disconnected by clicking on the “Close Current Connection” button.

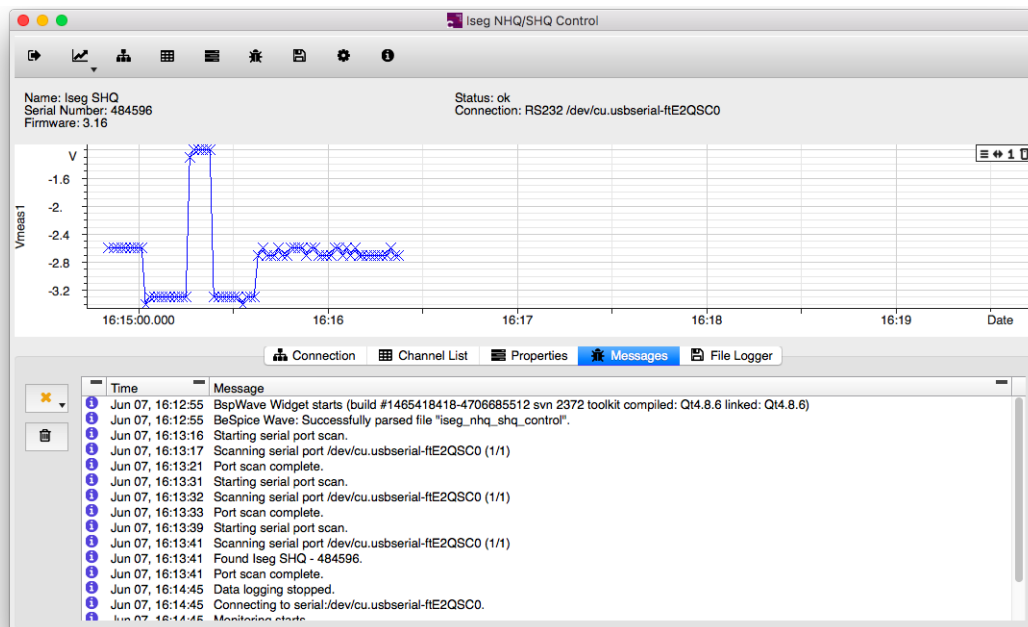
iseg NHQ/SHQ allows to control only one device at a time.

5.3 The Properties Page



The parameters and values of the power supply that aren't shown in the channel list are available in the "Properties" page. Only the flags "Enable auto-start" and the buttons allowing to save the current settings to the EEPROM can be set by the user. Please read the NHQ/SHQ user manual to find out how auto-start works.

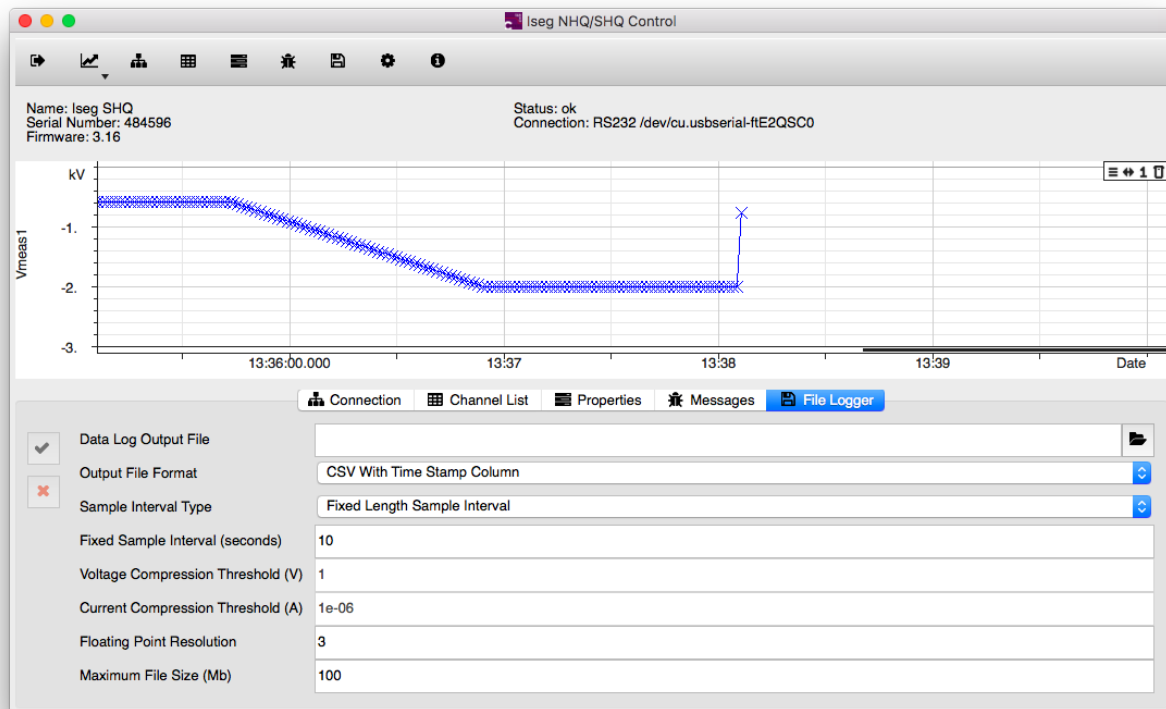
5.4 The Messages Page



Actions, messages and errors are written to the "Messages" page. The "Message Filter" button allows to select which messages are shown in the list. The list can also be cleared by clicking the "Clear Messages" button.

When selecting a particular message in the list, iseq NHQ/SHQ will attempt to add an annotation to the shown graphs. This allows for example to visualize where a current trip or similar event occurred. However due to the time required to communicate to the device these annotations might appear with a delay after the event occurred.

5.5 The File Logger Page



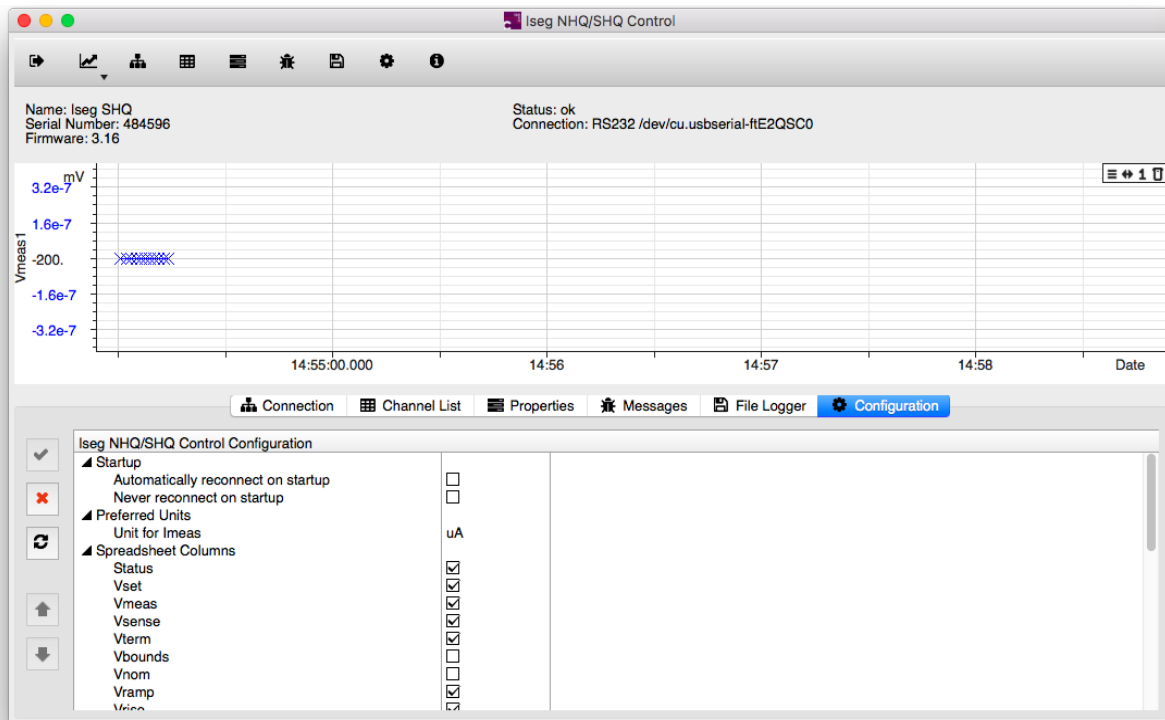
The "File Logger" allows to write measured values to a CSV file while operating the high voltage power supply.

Therefore a file has to be defined in the "Data Log Output File" field. The file can also be chosen by clicking the "Define Data Log Output File" button. The field "Sample Interval" allows to define the time intervals in the CSV file. Small values can lead to very large files if the file logger runs for a long time. The floating point resolution can be used to define the accuracy of the output.

The field "maximum File Size" allows to limit the file size. Data logging stops when this file size is reached.

The button "Start Data Logger" starts logging. The button "Stop Data Logger" ends the logging process.

5.6 The Configuration Page



The “Configuration” page is only visible when the “Show Configuration” button has been clicked. It is closed after having accepted or canceled the changes made in the list of configurable items.

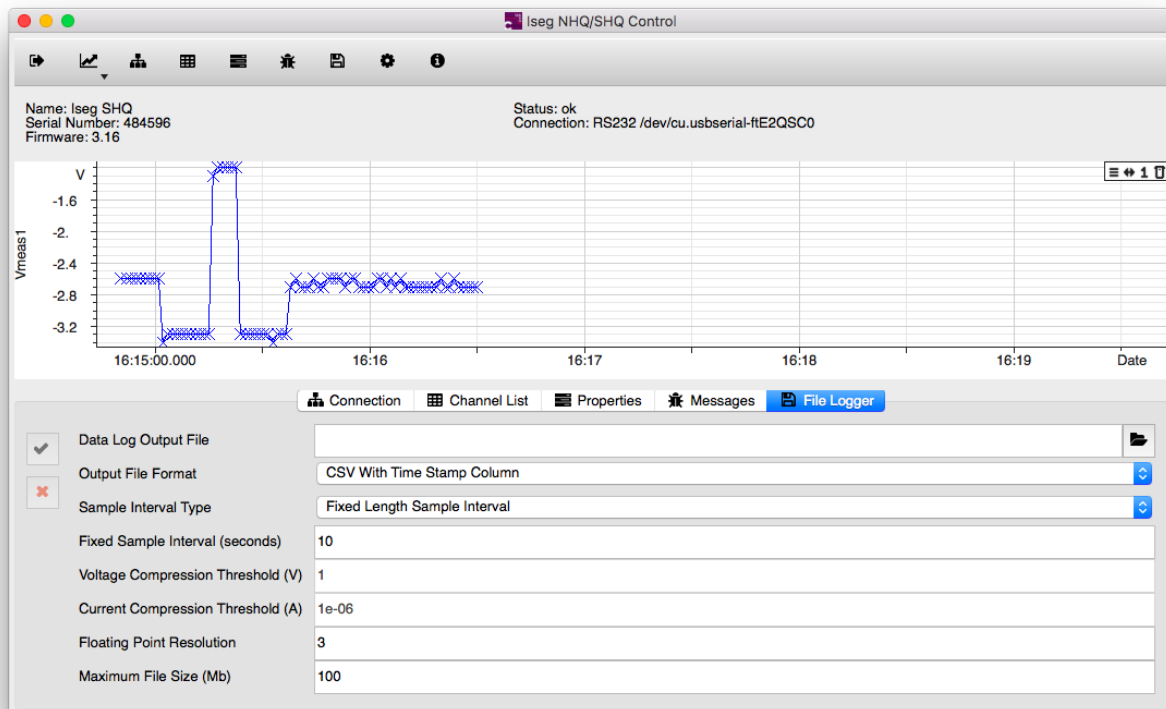
Several aspect of the user interface can be configured. Such as the startup behavior, the columns shown in the channel list and some aspects of the graph window.

The graph window can be configured to show symbols for each data point. The graph always shows the last part of the measured values except if the user interacts by zooming to another part of the curve. After each user action the graph windows waits some time before falling back to showing the last part of the curve.

The interval shown by default can be configured by changing the “automatic zoom interval” value. The time the graph window waits after each user interaction can be configured by changing the value for “user zoom timeout”.

Iseg NHQ/SHQ updates after having clicked the “Accept Changes” button. The “Set To Default Values” button re-establishes factory defaults. The “Cancel Changes” restores the previous settings and closes the configuration page.

5.7 The Graph Window



The graph window can be used to display the measured voltages and currents over time. It can show the measured voltages, the measured currents or both. Which curves are shown is defined in the drop-down menu for the “Show Curves” button in the tool bar.

The curves in the graph window can be highlighted by clicking on them. Highlighted curves can be removed from a graph by typing the “DEL” key. They can be dragged from one graph to another if 2 graph windows are shown. By default the graph window shows the last 5 minutes of the measured values. This interval can be configured in “Configuration” page.

However the shown section of the curve can be changed by zooming in or out using the mouse wheel. The way the graph changes depends on the position of the mouse pointer. The x- and y-axes can be zoomed independently. The right mouse button can be used to define a zoom box. While the zoom box is drawn hitting the “SPACE” key changes the zoom box in order to allow to zoom only one of the axes or to zoom out.

If no further user action occurs for 20 seconds, the graph window shows the last 5 minutes of the measured values again. Annotations for events that have been generated from the “Message” page can be edited and moved.

The curves shown in the graph windows can be dragged to external tools such as Excel® and OpenOffice Calc.

- The graph window operates with a data buffer limited to 10000 values. After having read 10000 values, the oldest values in the curves are removed. However the “File Logger” page allows to monitor the connected power supply for longer time periods.

6 Appendix

For more information please use the following download links:

This document
http://download.iseg-hv.com/SOFTWARE/isegControl2/iseg_manual_isegNHQ-SHQcontrol_en_1.0.pdf
Windows installation File
http://download.iseg-hv.com/SOFTWARE/isegControl2/iseg_software_isegNHQ-SHQcontrol_win_1.0.zip
Mac OS X installation File
http://download.iseg-hv.com/SOFTWARE/isegControl2/iseg_software_isegNHQ-SHQcontrol_mac_1.0.zip
Windows installation File
http://download.iseg-hv.com/SOFTWARE/isegControl2/iseg_software_isegNHQ-SHQcontrol_linux_1.0.zip

7 Manufacturer's contact

iseg Spezialelektronik GmbH

Bautzner Landstr. 23

01454 Radeberg / OT Rossendorf

GERMANY

FON: +49 351 26996-0 | FAX: +49 351 26996-21

www.iseg-hv.com | info@iseg-hv.de | sales@iseg-hv.de